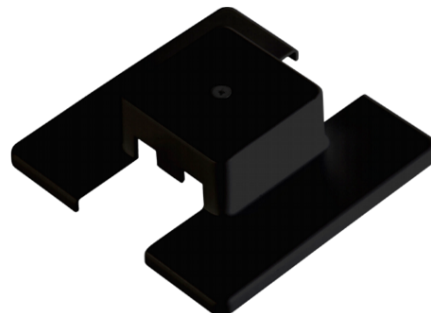


<b>Range Name:</b>	1-Circuit 230V
<b>Product Type:</b>	Track Systems
<b>Description:</b>	Centre Feed-Black-(Not suitable for suspended track)
<b>Product Code:</b>	T39-BL

<b>Body Colour:</b>	Black
<b>Mounting:</b>	-
<b>Track Adaptor:</b>	-
<b>Pendant Stem Length(mm):</b>	-
<b>Environment:</b>	Interior
<b>Size(mm)</b>	118 x 118
<b>Cut Out(mm):</b>	-
<b>Recessed Depth(mm):</b>	-
<b>Vertical Tilt(°):</b>	-
<b>Horizontal Rotation(°):</b>	-
<b>Light Source:</b>	-
<b>Lamp Type:</b>	-
<b>Lamp Included:</b>	-
<b>Lamp Base:</b>	-
<b>Lamp Life(Hours):</b>	-
<b>Lumen Output(lm):</b>	-
<b>Colour Temperature(k):</b>	- -
<b>CRI(Ra):</b>	-
<b>Beam Angle(°):</b>	-
<b>Lense:</b>	-
<b>Voltage(V):</b>	230V
<b>Total System Power(W):</b>	-
<b>Lamp Current(A):</b>	-
<b>Power Factor:</b>	-
<b>Luminaire Efficacy(lm/W):</b>	-
<b>Class:</b>	Class 1
<b>Gear:</b>	-
<b>EAN Code:</b>	5030785007333
<b>Dimmability:</b>	-
<b>Emergency:</b>	-
<b>IP Rating:</b>	IP20
<b>Weight(kg):</b>	0.09kg
<b>Housing Material:</b>	Plastic
<b>Material Finish:</b>	Natural
<b>Guarantee:</b>	5 Year Guarantee



Images, line drawings and measurements illustrated may, in some cases be approximate and for guidance only. Colour finishes will be maintained as accurately as possible but matching cannot be guaranteed.

Illuma Lighting are continually developing and improving its products. Technical specifications subject to change without prior notice.

For full terms and conditions visit: <https://www.illumina.co.uk/terms.htm>