



# Data Sheet

Product Code: GPINTW

---

**Product Description:** Intermediate Push-On/Off Switch Module (Dummy Dimmer) 6A (1 Grid Space)

---

**Range:** PowerGrid

**Finish:** White

**Product Category:** Intermediate Push Switch

**Insert/Knob Colour:** White Insert

**Barcode:** 5021575966657

---

**Dimensions:** 0

**Product Weight:** g

**Fixing Centres:** N/A

**Recommended Back Box Depth:** 35mm

**Operating Voltage:** 220/250V AC

**Maximum Load Rating:** 6A

**Maximum Current Rating:** 6A

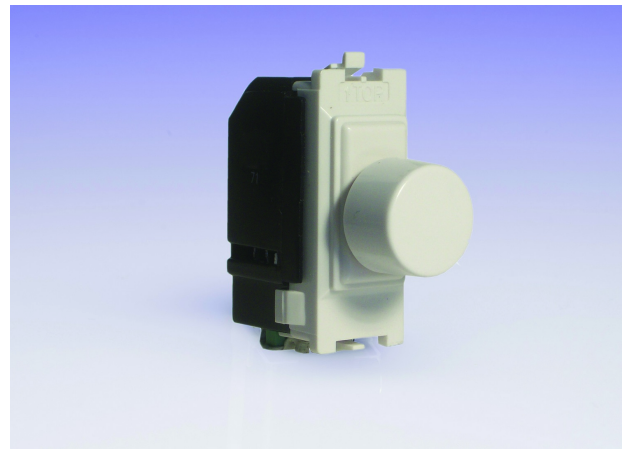
**Terminal (Live) Diameter:** 3.2mm; **Capacity:** 3 x 1.5mm<sup>2</sup>

---

**Intended Applications:** Indoor Use Only. Domestic lighting circuits.

**Safety Advice:** No dimming function.

**Applicable Safety Standard:** BS EN 60669-1



## Product Features

- ⊕ Modules suitable for any PowerGrid faceplate
- ⊕ Identical in appearance to dimmer switch without dimming function
- ⊕ Intermediate (3-way) switching
- ⊕ Push-on/off function only
- ⊕ Create your own switch combinations

BRITISH MADE 

---

*Date of Issue: 29th February 2016*

*All information is subject to change without notice. Errors and omissions excepted. Refer to date of issue for the latest version.*

*© Doyle & Tratt Products Ltd, Carylls Lea, Faygate, West Sussex, RH12 4SJ, United Kingdom. All rights reserved.*