



# Technical Data

## Weatherproof Empty Enclosures

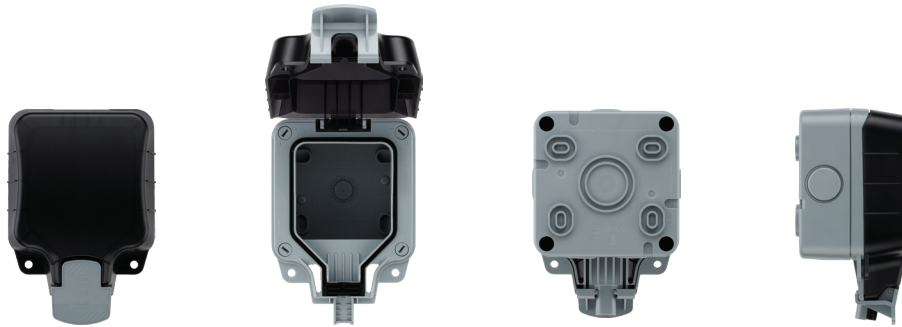
### Brief product description:

IP rated accessories designed to protect against ingress from water jets and dust, with durable seals that maintain integrity and a robust polycarbonate housing for high impact resistance which will not crack or fade, ensuring longevity of life.

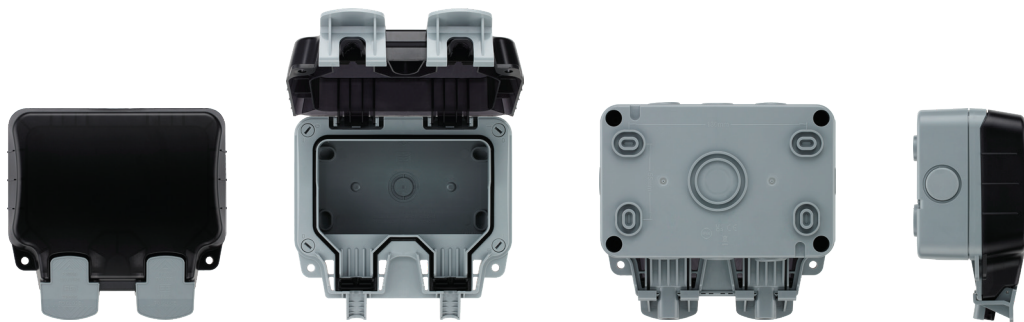
### Features:

- IP66 rated when in use
- Provides the ability to self-configure to suit the application
- Suitable for all products in the Nexus Moulded, Grid, Euro Module or Nexus Metal ranges (\*20A Switches and Fused Connection Units with bottom flex outlet not suitable for use)
- Fast fix - no separate screws, no screw covers, 150° rotation
- Patented cable entry - prevents accidental opening of cover by pulling of connected cable
- Large open/closer paddles for easier operation, flush fit to prevent accidental damage
- Multiple gland entry positions: WP1GEC has 5 versatile entry options and WP2GEC has 8 versatile entry options, with M25 capability with an easy push out blank plug design. 1 drill out entry 20/25mm in rear face

### Product Images

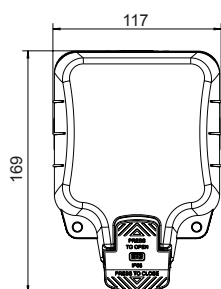


WP1GEC

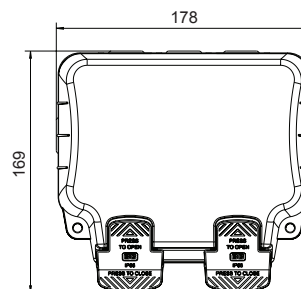
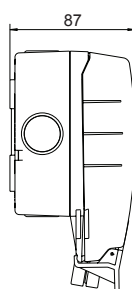


WP2GEC

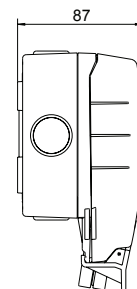
### Line Diagrams



WP1GEC



WP2GEC





# Weatherproof Empty Enclosures

## Technical Specifications

RoHS Directive	No	
WEEE Directive	No	
IP Rating	IP66	
<b>Number of cable entries</b>		
WP1GEC	5 x 20mm. 1 in each of 3 sides and 2 in the remaining side 1 drill out entry 20/25mm in rear face	
WP2GEC	8 x 20mm. 1 in each of the 2 sides and 3 in each of the top and bottom faces 1 drill out entry 20/25mm in rear face	

## Packaging Information

Cat No.	Description	Packaging Type			Pack Quantity			Barcode		
		Product	Inner Box	Outer Box	Each	Inner Box	Outer Box	Individual	Inner Box	Outer Box
WP1GEC	Single	Printed Box	/	Carton	1	/	10	5050765030090	/	5015056513478
WP2GEC	Double	Printed Box	/	Carton	1	/	10	5050765030106	/	5015056513485

## Weights & Dimensions

Cat No.	Description	Dimensions (H x W x D) cm			Weight (kg)			CBM (m <sup>3</sup> )
		Unpacked Product	Packed Product	Outer Box	Unpacked Product	Packed Product	Outer Box	Outer Box
WP1GEC	Single	16.7 x 11.7 x 8.7	19.7 x 12.2 x 9.7	13.6 x 38.3 x 49.8	0.29	0.37	4.08	0.02594
WP2GEC	Double	16.9 x 17.8 x 8.7	19.7 x 18.2 x 9.7	19.6 x 38.3 x 49.8	0.44	0.54	5.81	0.03738