



Veneto

Benedito Design

Wall fixture Veneto LED 8.3 LED warm-white 2700K ON-OFF Polished brass 452lm

Technical features

Luminaire total power: 8.3W

Real lumens: 452

Real lm/W: 54

Correlated Colour Temperature (CCT): LED warm-white 2700K

Lens / reflector angle: MEDIUM 36°

Structure material: Aluminium, Steel

Structure finish: Polished brass

Diffuser material: Methacrylate

Diffuser finish: Sandblasted

Driver Brand: HEP

Voltage / frequency: 100-277V/50-60Hz

Dimming protocol: ON-OFF

Power Factor: 0.90

THD%: 15

Useful life: 50,000h L80B20

Warranty: 5 años



Luminotechnic features

CRI: 80

MacAdam steps: 2

Photobiological risk: RG1

Lampholder	Quantity	Light source power (W)
LED	1	6.7W

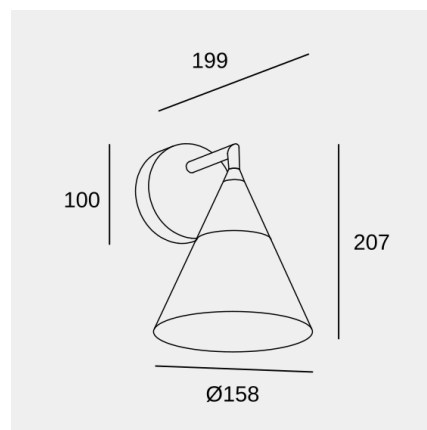
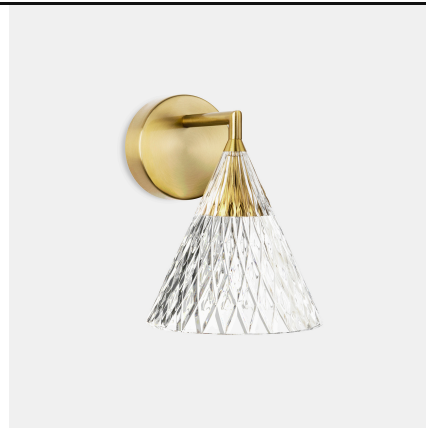


Image may not match reference. LedsC4 reserves the right to amend any of the product's components. The data related to flux, power and colour temperature may be subject to changes made by the manufacturer.



Veneto

Benedito Design

Wall fixture Veneto LED 8.3 LED warm-white 2700K ON-OFF Polished brass 452lm

Logistics



x 4

Net weight (kg): 0.7

Packaged weight (kg): 1.16

Packaging: 250mm x 100mm x
250mm

Image may not match reference. LedsC4 reserves the right to amend any of the product's components. The data related to flux, power and colour temperature may be subject to changes made by the manufacturer.