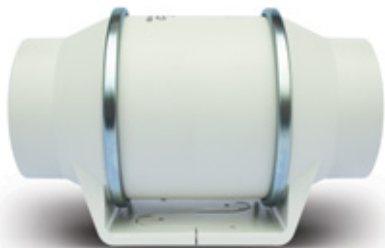


SILENT MV 160/100

Ultra Quiet In-line Duct Fans



Domestic axial in-line fans designed to solve ventilation problems for ducted systems. The motors are assembled on silent elastic blocks and fitted with ball bearings for enhanced working life. Flexible location enables the SILENT MV 160/100 fan to be connected to any point on the ventilation duct; at the beginning, in-between or at the end, without the loss of any performance. The standard version is fitted with a two-speed motor.

Features

- Sealed for life ball bearings
- Silent elastic blocks
- Fitted with a two-speed motor*
- Flexible location
- Five year guarantee
- IP44 rated

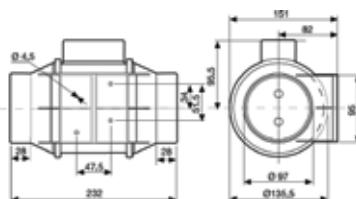
Benefits

- Incredibly silent running
- High performance
- Significant energy savings
- Complies with building regulations
- Easy installation
- Easy maintenance

ORDER CODE	SILMV160/100S	SILMV160/100T*
Sealed For Life Ball Bearings	•	•
Two Speed	•	
Adjustable Timer		•

*Timer models are commissioned at installation to operate at one speed, set to high or low dependant on application. Auxiliary two speed switches or variable speed controllers can be used with standard models.

Dimensions (mm) ▼



Technical Specification ▼

Product

The SILENT MV 160/100 is an innovative axial in-line extract fan fitted with a two-speed motor to offer a low level of noise and solve a large number of ventilation problems for ducted systems.

Applications

Shall be connected to any point of the ventilation duct to meet the Building Regulations - Part F (England), Scottish Building Regulations Section 3 and Part K (Northern Ireland).

Performance

MODEL	SILENT MV 160/100	
	LOW	HIGH
Speed (r.p.m.)	2200	2500
Watts (W)	12	20
Voltage (V) 50Hz	230	230
Airflow l/s (m ³ /h)	39 (140)	50 (180)
dB(A) @ 3m	21	24
Weight (Kg)	1.4	1.4
IP Rating	IP44	IP44
Ø Duct (mm)	100	100

Installation

Full installation guide should be enclosed with all products; or sent separately in advance - if required.

Motor

Should be a two-speed 230V 50Hz A/C motor, which can be set to either 2200rpm or 2500rpm and assembled on silent blocks and fitted with ball bearings for enhanced working life.

Fan

The impeller should be axial flow type.

Controllers

May be controlled via a two-speed selection switch or an electronic single-phase variable speed controller.

Servicing / Maintenance

The motor body of the in-line fan shall be easily dismantlable for repairs or cleaning. The impeller should be cleaned at least once a year using a damp cloth.

Guarantee

Shall be covered by a 5-year warranty subject to specified maintenance.

Compliance

CE

Optional Features ▼



Adjustable Timer

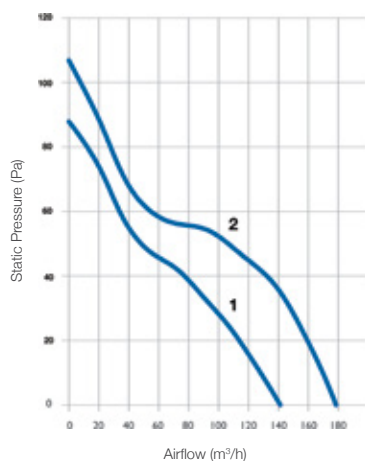
The timer model is fitted with a single phase one speed motor and electronic timer adjustable from approximately 1 minute up to 30 minutes

Easy Installation & Maintenance

The unique design of the support bracket allows the central cartridge, holding the motor and impeller assembly, to be fitted or removed without dismantling the ductwork.



Performance Curve ▼



Controllers ▼

For a comprehensive list of controllers and switches please refer to page 149.